

Classifieds! Real Estate

Trey Sullivan Real Estate
Trey Sullivan, Broker
 1802 Main St. - Junction, TX
 325-446-3725 325-446-6060
WWW.TREYSULLIVAN.COM

Gorgeous home sites with quality restrictions located 3.5 miles from Junction with beautiful views of the surrounding hills and creek.*

3.094 Acres - \$47,500.
 3.181 Acres - \$49,500.
 3.491 Acres - \$54,500.
 3.897 Acres - \$59,500.
 4.722 Acres - Creek frontage and views! \$79,500.

9.46 Acres-South Llano River with beautiful pecan trees and cozy 2BR/1BA cabin, workshop, close to town, a must see. \$375,000
 9.658 Acres - Main Llano River with deep soil, good grass, and easy access. \$179,000.*
 9.957 Acres - Beautiful Main Llano River with live oak and pecan trees. \$225,000.* **SOLD**
 9.998 Acres - 360+ ft. of Main Llano River frontage, newly remodeled 2750+-sf 4Br/2.5Ba. CH/A, large covered patio under huge oak trees, workshop, beautiful pecan tree shaded river view. \$425,000.*
 14.85 Acres - North Llano River with older 3Br/2Ba rock home, carport, and barn. Large pecan and oak trees with city utilities. \$300,000.
 15.901 Acres - Main Llano River with 800sf cabin. ***SOLD**
 22+/- Acres - Hill with oak trees, small field, fully fenced with electricity and water well, and beautiful views. \$135,000* **SOLD**
 55+/- Acres - Nicely updated hunter's cabin, old barn, several blinds/feeders, deer, turkey, hogs, live oak, cedar, and great hilltop views. \$298,000. **REDUCED**
 60+/- Acres with 1,000+/- ft. of creek frontage for swimming and enjoyment, large Pecan trees, charming old rock cabin, equipment shed, oak and cedar covered hills & canyon provide excellent hunting, electricity & water on site, less than 10 minutes from Junction. \$625,000.*
 62+/- Acres - Great hunting with many live oak, Spanish oak, and some cedar, windmill. \$217,000.
 67.04 Acres - Excellent hunting ranch surrounded by large ranches, abundant axis, whitetail, hogs, turkey, 2 blinds & feeders. \$199,500.* **REDUCED**
 144 Acres - YO Ranchlands 5,000+/- sf custom home, guest house, 1,600+/- sf modern foreman's home. Custom furnishings in all homes, and ranch equipment included. \$1,750,000 **CONTRACT**
 393.70+/- Acres - Great hunting ranch with large neighbors. Nice remodeled cabin including furniture, 6 blinds and 6 feeders, and recent cedar clearing. \$2,650/acre.

Houses
 109 South 4th - 3BR/2BA, CHA, nicely updated inside priced to sell. \$85,000
 306 West St. - 4Br/3Ba with CHA, recent remodel, new outside paint, great neighborhood, nice house. **Reduced to \$120,000.**

Commercial
 1802 Main St. - Office sites for sale. \$25,000- \$75,000*
 11.44 Acres - Junction Stock Yards - Large building, city water, and great frontage on Hwy 83 North. \$395,000

Home: 325-446-8680 Email: trey@treysullivan.com
 * Owner/Broker T-8-TFNC

Plumley Realty
Sammy Plumley, Broker 325/446-2830
 2119 N. Main - Junction, Texas
www.plumleyrealty.com

Acreage
 2.7 ac. Rock home, basement with fireplace, storage bldg., carport, close to town with paved frontage. \$75,000.
 5 ac. 4 bedroom/3 bath, double wide w/fireplace. London area. \$115,000.
 7.5 ac. 2 br., 2 ba. house, fireplace, new CH/A, shaded fenced yard w/patio, 2 br., 2 ba., bunk house, new 40'X120" metal barn, field. \$275,000.
 9.19 ac. 1Br., 1Ba, large front & back porch, cedar frame, fireplace, study & loft, 1 Br., 1 Ba., bunk house, 1 submersible well, 1 windmill, paved access. \$192,500.
 9.31 ac. 3 br., 2 ba., split level house, covered redwood deck, great views, Llano River access, work shop. \$194,000.
 10 ac. 3 br., 2 ba. mobile, S. Llano River frontage, 30 x 60 building, close to town. \$300,000.
 14.82 ac. N. Llano River, county road access, good fishing and swimming hole, electricity. \$178,200.
 23 ac. S. Llano River frontage, close to town, easy beach access for swimming and fishing, water well, nice building site w/view of surrounding hills, large pecan trees. \$650,000.
 120 ac. High fence, good well, mobile home, exotics & native game. \$300,000
 230 ac. N.E. Kimble county, springs, water well w/windmill, nice live oak cover, mixed hardwoods in draws, good hunting, private, spectacular views, cabin, possible divide.

SUTTON COUNTY
 15 ac. - Sutton County, lots of N. Llano River frontage, large body of water flows into shallow rapids, nice building site overlooking river, lots of wildlife. \$225,000.
 40 ac. Sutton Co. Paved frontage, good water well, electricity, deer & turkey. \$112,000.
 281 ac. - live oak terrain, good hunting, nice views with good building sites, private setting, whitetail, turkey and axis deer. \$1,625 per acre.
 276 ac. - beautiful entrance area with large live oaks, mesas with beautiful views, very little cedar, lots of wildlife, good building sites. \$462,300.
 357 ac. - wet weather draw meanders thru property that would make a good place for stock tank, windmill, working pens, good hunting, loaded with live oaks, protein feeder pens. \$1,695 per acre.
 385 ac. - loaded with live oaks, nice draw meanders thru property, good views, joins larger ranches, good hunting (whitetail, rio grande turkey, axis). \$1,645 per acre.
 553 ac. - Sutton County, nice live oak terrain, good water well, building site w/view, good access, excellent hunting. \$1,550 per acre.
 812 ac. - rolling live oak terrain, nice views, good hunting, stock tank, good grass cover, thick cover in place to make good wildlife habitat, private. \$1,595 per acre.
 878 ac. - 2 Br/1 Ba., large living area, concrete stained floors, fireplace, new construction, water well w/submersible, high fence on 2 sides, stock tank, live oaks with mixed brush, field, good soil and grass, excellent hunting, working pens. \$1,695 per acre.
 918 ac. - 4 Br./2Ba. house, 2 water wells, paved country road frontage, abundant wildlife, turnkey property. \$1,735 per acre.
 2950 ac. - excellent hunting, rolling live oak terrain, good road systems, lodge, 2 sides high fence, 2 stock tanks, 5 water wells, good cross fences, working pens.

Houses
 109 Martin Dr. - 3 Br., 1 Ba., brick home w/carport, large fenced backyard, nice trees. \$70,000.
 218 N. 15th - 3 Br., 2 Ba., hardwood floors, nice yard, 2 car port, large den. \$70,000.
 214 Substation Lane - 3 Br., 2 Ba., on approx. 4 acres, 2 additional houses, make good rental property. \$130,000.
 100 Hodges St. Vacant lot. \$8,500.
 609 Elm - 3 Br., CH/A, 1 Ba., large metal carport, nice yard with large pecan trees. \$65,000
 2505 College St. - 4 br., 3 1/2 ba., rock exterior w/nice landscaping, private covered patio, large den w/rock fireplace, 2 car garage, sprinkler system. \$230,000
 301 Cenizo - 2 Br/2Ba., corner lot, large living area, den w/wood burning stove, screened in porch, computer room, large carport. \$99,500.
 202 Patricia - 3 Br. **CONTRACT** fenced yard, carport, corner lot. \$79,500.

Commercial
 2+ ac.-I-10 @ 457 Exit-High visibility area with good access off I-10 each direction. Great potential. \$200,000.
 115 N. 8th commercial building, good office space, storage space. \$75,000.
 Cody Plumley, broker.....325/446-2324
 Misty Plumley, agent.....325/446-2324
 Carter Plumley, agent.....P-27-tfc.....830/591-2084

R.D. Kothmann Real Estate
Serving the Hill Country since the 40's.
 1701 Main - Junction - 325/446-3013
 www.kothmannrealestate.com
RANCHES/ACREAGE

KIMBLE COUNTY
 5.21 acres - Main Llano River frontage, large trees, excellent bank, some restrictions, priced to sell. \$160,000.
 9.45 acres - South Llano River frontage, main house, 2 cabins, workshop w/storage shed, quonset hut storage shed, large trees, good water.
 17.61 acres - Llano River frontage, small cabin, well w/pump, water views, good location, some restrictions. #350,000.
 20 acres - North Llano River frontage near Junction, hwy frontage, possible owner financing. **Reduced to \$99,000**
 22 acres - London area, nice metal barn w/cement floor, views. \$60,000
 20.253 ac - South Llano River frontage, 4/2 rock & stucco home w/high deck overlooking water, 2 fireplaces, unattached garage, small pecan orchard, water rights.
 25+/- acres - South Llano River frontage, beautiful water, well, highway frontage, close to town, abundant wildlife.
 28.45 acres - remote fenced place w/new cabin, bunkhouse w/fireplace, large barn, 2 storage sheds. \$150,000.
 40 acres - close to Junction, well, electricity. \$88,000.
 41.38 acres - North Llano River frontage, fences, highway frontage.
 47.41 acres - fenced w/well, 2002 mobile home w/all furnishings, metal shed, priced to sell. \$189,000.
 48 acres - good hunting w/whitetail, exotics, dove, turkey; game feeders, stands, food plots; some restrictions. \$170,000.
 50 acres - live oak country, good hunting, hilltop views. \$300,000.
 72 +/- acres - South Llano River frontage, large 4/4.5 brick home w/fireplace and big enclosed porch, 3/2.5 brick second house w/storage bldg. w/workers' quarters, large pecan bottom.
 100.27 acres - beautiful rock home w/CH&A overlooking Blue Mountains, 50x100 new barn, red sandy soil, abundant game, good horse property.
 246 acres - South Llano River, approx. 2800 ft. of frontage, 2 wells, fields and hills. Owner/agent.
 387+/- acres - east of Junction, spring w/small dam, well, hills & draws, large trees, good hunting.
 396.84 acres - springs, hilltop views, good cover, best of hunting, modest rock house w/tank from spring water.
 399.02 acres - rock home, 5 bdr/2bath/2half bath, CH&A, woodburning stoves, sprinkler system, heated pool, 4-car carport, barn, pens, guest house, 2 wells, tank-must see!
 561 acres - springs, nice 3/2.5 log home, working pens, blinds and feeders, 2 wells, hwy frontage, some minerals.
 667+/- - one-of-a-kind, hills overlooking Junction and confluence of North and South Llano Rivers, breathtaking views, has commercial corner.
 793.09 acres - North Llano River frontage, new fence, views, 2 wells, good whitetail & axis, limited cedar, possible owner financing.
 961+/- acres - Main Llano River frontage, water rights, great improvements with houses, barns, pens; spectacular views.
 2800+/- acres - 3 miles of both sides of Bear Creek, large springs, two concrete dams, 1800 acres under high fence, 3-story restored rock mansion, foreman's house, barns, sheds, abundant deer, turkey and fish. \$4,400/acre **Price reduced to \$3,950/acre.**

CONCHO COUNTY
 563.705 acres - **SOLD** Pant Rock area, hwy. frontage, best of deer and bird hunting, on Millersview-Doole water system, large older rock house, pens, stock tanks, partial CRP program, some minerals. **Price reduced to \$1,375/acre.**

SUTTON COUNTY
 400+/- acres - rolling hills, beautiful views, good roads, excellent hunting. \$1,350/acre
 1,000+/- acres - well, older house, barns, pens, fences, excellent hunting. \$1,350/acre
 8,500+/- acres - live oak country, gently rolling, good fences, modest improvements, **great deer, hwy. frontage.**

MENARD COUNTY
 42.52 acres - small cabin, motor home w/rebuilt motor and transmission, 2 deer blinds, live oaks, good roads, electricity, some restrictions. \$85,040.
 67.68 acres - small cabin, 4 feeders, well, good hunting, some restrictions. \$2,250/acre.
 1118.428 acres - **SOLD** Menard & Schleicher Co., well, highway frontage, fences, good hunting, some restrictions. \$1,450/acre.

KERR COUNTY
 50.8 acres-nice 3/3 home w/loft, fireplace, CH&A, porch, deck, all furniture goes, well w/large storage tank & well house, exotics, gated community, exclusive, part of Dominion, originally part of Y.O.
COMMERCIAL
 514 Pecan - 2 story apt. complex with two 1/1 apts. w/CH&A, great location w/big trees. \$75,000.
 1.63 acres - Inside city limits, price reduced.
 Lot on Hwy. 377 S. near Main St. reduced to sell at \$60,000.
 2005 N. Main - large lot w/nice building, plenty of parking, good location. \$175,000.
 Corner of Hwy. 377 S. and Main St. at light, best of locations.
LOTS
 Two adjoining lots on Mt. Laurel, good location. \$16,000 each
HOUSES
 306 S. 16th - 3/1 home w/CH&A, Metco roof, gazebo in yard. \$69,000. **Reduced to \$59,000.**
 206 Patricia - brick 2/1 w/den added on, large backyard. \$75,000.
 301 Pecan - 3/2 singlewide with CH&A, open porch, trailer only. \$17,000.
 104 Emory-2/1 house w/CH&A, porches, enclosed garage, 2 lots, nice landscaping. **Reduced to \$67,900.**
 304 Oak St. - 3/1.5 home w/views of Lake Junction on S. Llano River, attached 2-car garage w/large workshop and storage room, 2-space RV carport, 8-ft. privacy fence around landscaped back yard w/covered deck, fishpond w/stone waterfall, oak & pecan trees, 2 lots. **Reduced to \$205,000.**
 315 West St.-3/2 brick home w/metal roof, new CH/CA, fireplace (insert), carpet & tile, unattached garage, unattached apartment, sprinkler system, large privacy fence on 2 sides, secluded area on outskirts of Junction. \$120,000.

Greer Kothmann, Broker.....446-3241
 Kelly Kothmann.....446-3280
 W. L. Taff.....K-T-TFNC.....475-2155

Junction Ranch Real Estate
 1100-B Main Street Junction, Texas 76849
 (325) 446-3811
www.junctionranchrealestate.com

220.66 Acres-Llano River frontage, high bluffs with beautiful building sites. Easy access to river. Close to town.
 117.26 Acres-Easy access, electricity, heavily wooded with liveoaks and cedar. Loads of game. Axis, Blackbuck, whitetail, turkey, and hogs. Owner financing is available.
 108.03 Acres-Llano River frontage, easy access to river. Water well, building sites with views. Great hunting & fishing. 10 minutes from town.
 38+/- Acres-Menard Co., Great hunting tract. \$1,695 per acre.
 29.086 Acres with Johnson Fork Creek tract. New 3 Br/2BA, 2000 sq. ft. rock home. 400 sq. ft. cabin, 1200 sq. ft. shop with living quarters. Views & wildlife. \$289,000.

COMMERCIAL
 5+/- ac. - great investment-located 83 & I-10. \$2,300,000
 1908 Main. Great location. Almost one acre. **REDUCED to \$80,000.**

HOUSES
 804 Hackberry - 2 BR/1 BA., Just remolded, very cute. \$67,500.
 Large two level home on 3+ acres. 3 BR/1 1/2 BA. Needs some finish work. \$125,000.
 310 S. 9th St. - 3 or 4 bedroom, 1 bath, living/dining combo, large country kitchen. Needs a family/handyman. Quiet neighborhood. \$43,000.
 210 N. 19th - 3 BR/2 BA, living room with fireplace, 2 car garage, patio, fenced yard. Great neighborhood. \$98,500.
 115 Mesquite - Nice 3 BR/2 BA home on 2 lots. Large master bedroom, patio, carport, storage bldg. Quiet neighborhood. \$87,500.
 410 Cenizo - 3 BR/2 BA, 3 lots, large den, carport, workshop & RV carport. **Reduced to \$155,000.**
 2 lots - Bluebonnet. Last of the lots. \$17,000.
 420 S. 16th - 3 BR/1BA, double carport, nice work shop.

SAN SABA COUNTY
 45+/- ac. farmland, 1 well & 2 earthen tanks. Great for bird hunters or watchers.
 Mary Murr, Broker.....325-446-3150
 Mary Ruth Williams, Asso. broker.....325-446-2539
 Pam Bannowsky.....325-446-4098
 L.R. Castleberry.....J-31-tfc.....325-475-2028

BIERSCHWALE LAND CO.
 P.O. Box 154
 Junction, Texas 76849
 325-446-2763 Or 432-631-0589
 Paul Bierschwale, Broker® Scott Phillips®
www.bierschwalelandco.com

Convenience Store, gas, groceries, restaurant and feed. Great location. Harper, Texas.
 2 ac. - Intersection of IH-10 & 2169.
 5 ac. - One mile west of Junction between 1674 & I-10.
 6 +/- ac. - Executive home/hunting & tennis court.
 7.6 ac. - Near Morgan Shady Park. Water well. Large pecan trees. **SOLD**
 Three, 9.5 to 16 ac. river tracts, North Llano.
 40 ac. - 1100 sq. ft. cabin, AC/H, great hunting. \$215,000.
 50.3 ac. near town, windmill & water well.
 Six-100 to 140 ac. tracts - 7 miles N.E. Hwy 377 and 1.9 miles on County Rd. 372.
 60 ac. w/travel trailer. Off Loop 479.
 158 ac. w/well and solar panel. Segovia area.
 204.45 ac. - 6 hunting blinds w/feeders, 30x40 metal building, 2 mobile homes, water, septic. \$2750 ac.
 212 ac.-Live water ranch, new 3/2 steel frame home. Great hunting. Tremendous views. Must see.
 289 ac. - Great hunting ranch. \$1,675 per ac. **SOLD**
 370 ac. Near Junction. Hwy frontage. Will divide.
 741 ac.-Clean, interior caliche road, rock & pipe entrance, beautiful views, approx. 8 miles east of Junction off 377. \$2,500 per ac.
 Member MLS-Gillespie County Board of REALTORS®

Hill Country Real Estate, LLC.
Ward Bolt Whitworth - Broker
 Premium office space for rent.
 137 ac. Main Llano River. New listing.
 112 ac. Llano River and hwy frontage, bluff with views.
 16.8 ac. River front. \$249k.
 9.4 ac. River front. \$159k.

Buyers call about other ranches not found here!
702 College 325-446-8790 Office
www.hillcountryrealestatellc.com

GIPSON
REAL ESTATE SERVICES, LLC

Sue Lewis Gipson, Broker 830-739-6992; 325-446-2443; 830-896-4106
 www.gipsonrealestateservices.com

50 acres, frontage on Hwy 479, surrounded by large ranches, scenic tract for building site. \$6,500/acre.
 234 S. 16th 3/2 fireplace, shop, large privacy fenced back yard. \$96,500. **PRICE REDUCED.**
 220 acres, hwy frontage, Llano River frontage. Can be divided. Beautiful building sites.
 248 +/- ac., mobile home, blinds, feeders, pond, native and exotic game, Edwards County. \$3150/ac.
 280 acres, Menard County, cultivated land with San Saba River frontage, pecan bottom, irrigation rights.
 633.21 ac. Kerr/Real Co. Hwy frontage, abundant wildlife, wells, house & more.

Inventories are low & we need all types of listings

Ted Lewis 325-446-7135
 Rance Roberts 830-329-1496
 Roxie Thomas 972-742-7241
 Jake Jacob G-27-tfnc 830-459-2712

Convenience Store, gas, groceries, restaurant and feed. Great location. Harper, Texas.
 2 ac. - Intersection of IH-10 & 2169.
 5 ac. - One mile west of Junction between 1674 & I-10.
 6 +/- ac. - Executive home/hunting & tennis court.
 7.6 ac. - Near Morgan Shady Park. Water well. Large pecan trees. **SOLD**
 Three, 9.5 to 16 ac. river tracts, North Llano.
 40 ac. - 1100 sq. ft. cabin, AC/H, great hunting. \$215,000.
 50.3 ac. near town, windmill & water well.
 Six-100 to 140 ac. tracts - 7 miles N.E. Hwy 377 and 1.9 miles on County Rd. 372.
 60 ac. w/travel trailer. Off Loop 479.
 158 ac. w/well and solar panel. Segovia area.
 204.45 ac. - 6 hunting blinds w/feeders, 30x40 metal building, 2 mobile homes, water, septic. \$2750 ac.
 212 ac.-Live water ranch, new 3/2 steel frame home. Great hunting. Tremendous views. Must see.
 289 ac. - Great hunting ranch. \$1,675 per ac. **SOLD**
 370 ac. Near Junction. Hwy frontage. Will divide.
 741 ac.-Clean, interior caliche road, rock & pipe entrance, beautiful views, approx. 8 miles east of Junction off 377. \$2,500 per ac.
 Member MLS-Gillespie County Board of REALTORS®
Call for other properties not listed here.

Hill Country Real Estate, LLC.
Ward Bolt Whitworth - Broker
 Premium office space for rent.
 137 ac. Main Llano River. New listing.
 112 ac. Llano River and hwy frontage, bluff with views.
 16.8 ac. River front. \$249k.
 9.4 ac. River front. \$159k.

Buyers call about other ranches not found here!
702 College 325-446-8790 Office
www.hillcountryrealestatellc.com



Pictured from left to right are Cadets Wyatt Burton, Henry Whitworth, and Benjamin Ricker. These three Junction boys were at the Fredericksburg Airport on Sunday, August 24, for an 'O' Flight. It was the first Orientation Flight for Airmen Burton and Whitworth and the second for Senior Airman Ricker. The boys are in the Civil Air Patrol, US Air Force Auxiliary and conducted this O Flight in a CAP Cessna 182. Each boy got to go up twice and fly the plane once, under the direction and supervision of an experienced CAP Pilot. The Orientation Flights are designed to introduce boys (and girls) to general aviation. The CAP focuses on Aerospace Education, Leadership and Emergency Services missions. If you would like more information about their flights or the Civil Air Patrol, these boys would be happy to answer any questions!

PUBLIC NOTICE

PUBLIC NOTICE

The Texas Department of State Health Services has granted a staffing variance to Kimble County EMS effective August 11, 2008. The variance will allow KCEMS to operate its emergency vehicles without meeting the minimum staffing requirement of at least two Emergency Care Attendants while responding to and transporting emergency patients. The variance is in effect 24 hours per day, seven days per week and will expire on December 31, 2008.

K-33-1c

Kimble County Elected Official's Annual Salaries

	2009
County Judge	\$42,482.00
State Supplement to County Judge	\$15,000.00
County & District Clerk	\$36,704.00
Sheriff	\$50,000.00
Justice of Peace	\$36,704.00
County Treasurer	\$36,704.00
County Attorney	\$33,303.00
State Supplement to County Attorney	\$20,833.33
Per Commissioner	\$16,833.00
Constable (expenses)	\$ 1,082.00

K-33-1c

More Classifieds! Real Estate

RANCHES

50 Acres 10 minutes northeast of Junction, nice views, good bottom land, building sites. Whitetail Deer, wild turkeys, dove, and wild hogs. \$2,250 per acre
 50 Acres 10 minutes northeast of Junction, nice views, good bottom land, building sites and Gentry Creek. Whitetail Deer, wild turkeys, dove, and wild hogs. \$2,500 per acre
 52 Acres 46 miles NW of Kerrville. 3-2 home on top of hill with super views of the Texas Hill Country. Barn, garden, good access one mile off Hwy. 479. Fenced and cross-fenced. Nice Hill Country property. \$335,000. Call Barry McCollom 830-896-1122; barry@mccollom.com; www.mccollom.com/2940.htm.
 63 Acres 10 minutes northeast of Junction, nice views, good bottom land, building sites. Whitetail Deer, wild turkeys, dove, and wild hogs. \$2,500 per acre
 90 Acres Minutes to Junction, own your own hill. Views, native wildlife, unique ranch. \$2,250 per acre
 173 Acres 10 minutes northeast of Junction, nice views, good bottom land, building sites. Whitetail Deer, wild turkeys, dove, and wild hogs. \$2,000 per acre
 233 Acres Ready to go, Cabin, Windmill, small tank, and new fence. Just minutes to Junction, and frontage on County road 311. \$2,900 per acre
 260 Acres 10 Minutes northeast of Junction, nice views, good bottom land, building sites, hill tops, and Hardwoods. Whitetail Deer, wild turkeys, dove, and wild hogs. \$2,000 per acre
 631 Acres Views of Tea Cup Mountain and the Llano River Valley, Native wildlife, hardwoods, well, and a nice mix of Hill tops and valleys. \$2,000 per acre
 742 Acres 5 miles north of Junction. Gentle rolling pastures with some high hills, valleys & scenic canyons. There are some springs in the canyons. \$2,200 per acre
 1,500 Acres 10 miles north of Junction. A great combination of the best features of the Texas Hill Country - scenic hills, high plateau pastures, wooded valleys & creek bottom land. Spring-fed Gentry Creek runs through the ranch for about 3,500+/- feet. Has a new water well & is fenced on 3 sides. \$2,250 per acre
FOR THE RANCHES LISTED ABOVE CONTACT BEAUX COOK, AGENT 830-896-1122 OR 210-387-9949

Various sizes ranging from 30 Acres up to 300 Acres with or without improvements just north of Harper. Nice rolling Hill Country terrain. Good views from hilltops. House, large hanger/barn & 2,700' grass airstrip. (2876) Barry McCollom, Agent
 320 Acres 14 miles west of Junction. Gentle rolling Hills & river bottom land. _ miles frontage on the beautiful spring-fed North Fork Llano River. 3BR/2BA rock home, carport, metal barn & shed. One water well with submersible pump, one windmill & one 15,000 gallon holding tank. Native & free roaming exotic game. (2848) Beaux Cook, Agent
 350 Acres - 16 miles northwest of Kerrville via IH-10 & Hwy. 479. Gentle rolling terrain with good turf and oak trees. Free roaming native & exotic game. Water well & boundaries fenced. Steve Oehler, Agent

JOHN McCOLLOM & ASSOCIATES
 341 Junction Hwy.
 Kerrville, TX 78028

(830) 896-1122

www.mccollom.com

M-22-tnfc



The Dirt on Hill Country Gardening

by David Steinbrunner & Linda Tarrant



Fall Vegetables! Hooray for the rain! If you did your accordion composting in your vegetable garden in the spring, now is the time to plant your fall vegetables on top of your composted trenches. Most vegetables will do well in the fall, and you'll experience fewer pests and diseases. For your fall tomatoes, plant right now. If you still have tomatoes growing, remove about 1/2 of the branches by selectively cutting out dead or dry branches. In effect, leave the branches with the best looking foliage. Then foliar feed your plants and add more compost on their feet, and dribble agricultural molasses on top of the compost. Go ahead and plant beans, broccoli, Brussel sprouts, cauliflower, sweet corn (if you have a lot of room), cucumbers, peas, potatoes, and summer squash. Do this soon! For your seeds, cover with organic fertilizer, and for your plants, use liquid, organic fertilizer. Again, drib-

ble your molasses to stimulate the soil organisms. Short of a very early freeze, you should have a good selection of vegetables by the end of October. After you've planted your fall garden, go between the rows with more of the accordion composting trenches. If you did trenches last year, these should be fairly easy to dig up and add more compost, and it will get easier every year. If this is your first attempt, follow this procedure. 1. Dig a trench between your plants in rows that is about a foot deep and as wide as your shovel. 2. Drop your kitchen refuse, any clippings from shrubs or trees, dropping leaves, etc. 3. Add any or all of the following to activate the composting process: soil conditioner, manure, molasses, lava sand, and green sand. 4. Sprinkle a bit of dirt in the trench as you add your organic materials to cover them. 5. Eventually, end up with a mounded row with dirt as the top layer. This will

be your planting medium for your spring garden. Plant of the Week. Velvetleaf Cassia (Senna lindheimeriana) is an easy-to-grow, extremely drought tolerant perennial. This one easily self-seeds, and is coming up in our garden despite the hot, dry conditions. It really doesn't like wet feet, so plant it on a slope, even in very poor soil, and it will reward you. The bloom is about an inch across and is a bright, yellow color.

We encourage your questions, comments to David at dsteiny@gvtc.com.

Chores for this week! Keep weeding with the 20% vinegar solution. Orange Oil additive or Insecticidal Soap will make it adhere to plants better. ! Use Neem Oil on most insect pests or on fungus, such as powdery mildew or black spot. ! Watch for planting at the Hunt Preservation property at the crossroads in Hunt this week. We encourage your questions, comments, or your own "Personal Plant of the Week" by writing David at dsteiny@kctc.com.

JUNCTION EAGLE MIDDLE SCHOOL FOOTBALL SCHEDULE

DATE	OPPONENT	TIME	LOCATION
SEPT. 11	MEDINA	5:00	MEDINA
SEPT. 18	HARPER	5:00	HARPER
SEPT. 25	ELDORADO	5:00	ELDORADO
* OCT. 2	CHRISTOVAL	5:00	JUNCTION
* OCT. 9	IRION COUNTY	5:00	IRION COUNTY
* OCT. 16	ROCKSPRINGS	5:00	JUNCTION
* OCT. 23	SAN SABA	TBA	TBA
* OCT. 30	MASON	5:00	MASON
* NOV. 6	MENARD	5:00	JUNCTION

* DENOTES DISTRICT PLAY

PUBLIC NOTICE

NOTICE TO ALL PERSONS HAVING CLAIMS AGAINST THE ESTATE OF HARVEY LYNN WEAVER, DECEASED

Notice is hereby given that original Letters Testamentary for the Estate of Harvey Lynn Weaver, Deceased, were issued on August 22, 2008, in Cause No. 2232, pending in the County Court of Kimble County, Texas, Sitting In Matters Probate, to: Stephen Lynn Weaver, as Independent Executor. The residence of Stephen Lynn Weaver is Dallas County, Texas. His mailing address is:

807 Willow Crest Drive,
 Richardson, Texas 75081

All persons having claims against this Estate which is currently being administered are required to present the same addressed in care of the Independent Executor, or in care of the Independent Executor's attorney of record, or in care of "Representative, Estate of Harvey Lynn Weaver", within the time and in the manner prescribed by law.

DATED the 22nd day of August, 2008.

WILLIAM KEATON BLACKBURN
 Attorney for the Independent Executor
 Post Office Box 446
 Junction, Texas 76849

B-33-1c

Notice of Public Meeting

to discuss Junction Independent School District's State Financial Accountability Rating

Junction Independent School will hold a public meeting at 6:00 p.m., Wednesday, September 10, in the Middle School Library, Junction, Texas.

The purpose of this meeting is to discuss Junction Independent School District's rating and the state's financial accountability system.

J-33-2c

HOMES FOR SALE

McGowan acres - 5 acres w/cabin. \$50,000 OBO. 469-951-9479.

R-33-4p

1506 N. Llano, 2/1, central h/a, sits on 1 acre of land. Call 325-446-4613.

M-40-4fc

Hill Country, Junction. 416 McGowan Road. Reduced from \$165,000 to \$150,000 August only. 3 Br on 6.94 acres. 888-944-9500 Bates-White Realtors.

B-30-5p

More Classifieds! Real Estate

Make rural financing easier

Get Pre-Approved



Loans for rural property and rural homes
 Most loans approved within 24 hours

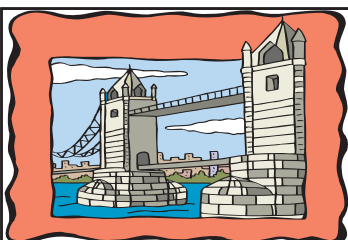


Mason Credit Office
 1-877-959-5500

www.capitalfarmcredit.com

Part of the Farm Credit System





London Bridges

by Claudette Primeaux

I wish you could have seen the look on Wes McNeil's face when I told him that the county plans to condemn his property for use as a sewage treatment plant! He started swearing, waving his arms, and turned red. If I could have kept from laughing a little longer, I believe his hair would have curled. It was worth every minute of it.

We had a good market day on Saturday. My tomatoes and okra went fast, and even my never ending squash was gone by 9. According to my sources (farmer that I am), we can prune our tomato plants pretty much right now (if they are still alive), feed them, water them and re-mulch them. They will start putting on new tomatoes, and we will have a whole new crop before the first freeze.

Some of us went to Hext Sunday night to support their first fundraiser for the newly reorganized fire department. The old department had been disbanded, and new folks are working hard to acquire equipment and supplies for its volunteers. They served a good barbeque chicken supper and had a great turnout. It was nice to meet President Fleming, Dale Ernst, Herman, and the unidentified gentleman who helped me back out of the parking lot.

A number of very nice compliments were paid by the Hext members to the Auxiliary and to London's volunteer fire fighters. All you have to do is drive up the road between London and Hext and see the results of a devastating range fire earlier this year to

know the importance of our rural fire departments. Hext and London were among the responders to that fire.

Ladies – plan on one more meeting. The Auxiliary needs to get together on Thursday night, August 28, at 7 p.m. There are a number of issues, including fundraising and inventory of supplies. I know everyone is busy, but it should take just 30 or so minutes to conduct our business. We'll meet at the picnic tables by the dining room.

The regular London fire department meeting will be September 2 at 7 p.m., and final plans will be discussed for the annual barbeque benefit dinner to be held October 18. Last year there were more dinners sold than ever before. I believe having several activities going on at the same time really benefits everyone. The Fair on the Square brings in shoppers, and those looking for unique items to buy usually hang around for a meal for a good cause.

The final draft of the Articles of Incorporation and the Bylaws for the Community Association are available for review at the Center for anyone interested in reading and evaluating them before the September meeting. They will be posted outside at the dining room. Don't let the length of the bylaws scare you – they are intended to be effective for a long time and so give the Association the authority to do many things that are not done today. Take note of words like "may" and "could". Call me if you have any questions, or if you would

like to have a copy, I'll be glad to email them to you.

I finally spent about 30 minutes with Jerry Hand going through the old French and Winnie Cummins place. Of course, it has been vacant and/or neglected for many years, but it still has a certain charm that time cannot erase. The wood floors and the little fireplace, as well as the old open well and windmill, give a sense of what life was like at one time. There is still a decorative rock ledge and sitting area around a huge stump where a mulberry tree once stood, and I'm sure Ms. Winnie must have had flowers in the still outlined garden beds.

One interesting thing was in the bathroom. The bathtub sits next to – I mean right in FRONT of – the commode. We laughed about the planning that went into that one. Or maybe they just liked to soak their feet while sitting there, in some earlier form of multi-tasking.

I hope to talk about the old place again later. If anyone has any stories about the Cummins or their home, I'd love for you to share with me. Email is heartoftexas@earthcomm.com or phone number 325-475-2219.

Ginger Andrews has graciously agreed to include some of us in her visits with Mr. Lange from Kooksville when they go to the old house at Yates (see last week's "Ivy Echoes"). I was in the house several years ago when it was on the market and fell in love with it. I'm anxious to hear more about the Yates community – I had no idea there was more than the post office and house until Ginger mentioned it.

Better go – see y'all out there between the bridges of Kimble County!

New Sul Ross endowment to benefit ag, natural resources majors

A \$160,000 endowment will provide scholarships for Agricultural and Natural Resource Sciences majors at Sul Ross State University. Peggy Landis Matli, Fredericksburg, and her nephew, Heath Landis, New Braunfels, and Sul Ross President R. Vic Morgan recently signed documents establishing the Gilbert A. and Laura P. Schmidt Agricultural and Natural Resource Sciences Endowment and Scholarship Fund.

The Schmidts were longtime ranchers in Blanco, Kimble and Gillespie counties. Peggy Matli, a niece, and Landis, a great-nephew, are both Sul Ross graduates.

Scholarship applicants must be Agricultural and Natural Resource Sciences majors, with preference given to graduates of Blanco, Kimble or Gillespie County high schools. Continuing students must be full-time students in good disciplinary standing. Beginning freshmen must be fully admitted to Sul Ross. Returning students must be making normal progress toward a degree with a per semester grade point average

of 2.75 or higher. Scholarship selections will be recommended to the University Scholarship Committee by the Department of Agricultural and Natural Resource Sciences Scholarship Committee.

"My aunt Laura did not choose to go to college, but always said this was the place she would choose to go to school," Matli said.

"Going to Sul Ross was a given in our family, and this (scholarship endowment) is the right place to honor Laura and Gilbert."

Matli's brother, Jack Landis, also attended Sul Ross. Peggy Landis Matli later worked as an administrative assistant for Bob Posey, vice president of Student Affairs, then was a teacher and counselor at Alpine High School for 19 years. She later moved to Fredericksburg, working as an assistant principal in the Fredericksburg Independent School District, retiring in 2008 after a 35-year education career.

Heath Landis graduated from Sul Ross in 1998 and has been a pharmaceutical representative in animal health for

the past 10 years. "I enrolled in the veterinary tech program," he said. "I was going to spend two years here and then go elsewhere. After two years, you couldn't drag me away from Sul Ross."

"Heath's career has been exactly what he went to Sul Ross to study," his aunt said. "You can go to Sul Ross and get a great education, but more importantly, you can walk out the door, get a really good job and do well."

"Sul Ross gives you people skills and confidence," Matli said. "For us, it was a good foundation for getting out and dealing with people."

Morgan said, "Sul Ross has long been recognized for providing solid career preparation for its students. We are grateful to the Schmidt and Landis families for their acknowledgment of our mission and their generosity in providing opportunities for present and future students."

Sul Ross endowments now approach \$13 million with 214 separate endowments.

For more information on endowments, contact Leo Dominguez, (432) 837-8033 or leodo@sulross.edu



Stephanie Gonzales kisses her son, Christopher Umscheid, goodbye on his first day of kindergarten.

Statement of Increase/Decrease

If Kimble Hospital District adopts a 2008 tax rate equal to the effective tax rate of \$ 0.2131 per \$100 of value, taxes would **INCREASE** compared to 2007 taxes by \$ 13,804.91.

Schedule A- Unencumbered Fund Balances

The following estimated balances will be left in the unit's property tax accounts at the end of the fiscal year. These balances are not encumbered by a corresponding debt obligation.

Type of Property Tax Fund	Balance
N/A	0.00

Schedule B - 2006 Debt Service

The unit plans to pay the following amounts for long-term debts that are secured by property taxes. These amounts will be paid from property tax revenues (or additional sales tax revenues, if applicable).

Description of Debt	Principal or Contract Payment to be Paid from Property Taxes	Interest to Be Paid from Property Taxes	Other Amounts to be Paid	Total Payment
	\$ 0.00	\$ 0.00	\$ 0.00	\$ 0.00

(expand as needed)

Total required for 2006 debt service	\$	0.00
- Amount (if any) paid from funds listed in Schedule A	\$	0.00
- Amount (if any) paid from other resources	\$	0.00
- Excess collections last year	\$	0.00
= Total to be paid from taxes in 2006	\$	0.00
Amount added in anticipation that the unit will collect only 98.0 % of its taxes in 2006	\$	0.00
= Total Debt Levy	\$	0.00

This notice contains a summary of actual effective and rollback tax rates' calculations. You can inspect a copy of the full calculations at Kimble Central Appraisal District; 501 Main St. Junction, TX 76849

Name of person preparing this notice Kandy Dick
 Title Chief Appraiser
 Date Prepared August 25, 2008

Notice of Public Hearing on Tax Increase

The Kimble Hospital District will hold two public hearings on a proposal to increase total tax revenues from properties on the tax roll in the preceding tax year by 2.67% percent (percentage by which proposed tax rate exceeds lower of rollback tax rate or effective tax calculated under Chapter 26, Tax Code). Your individual taxes may increase at a greater or lesser rate, or even decrease, depending on the change in the taxable value of your property in relation to the change in taxable value of all other property and the tax rate that is adopted.

The first public hearing will be held on **September 4, 2008 at 5:30 p.m. @ Hospital Meeting Room.** The second public hearing will be held on **September 8, 2008 at 5:30 p.m. @ Hospital Meeting Room.**

The members of the governing body voted on the proposal to consider the tax increase as follows:
FOR: Charles Loeffler, Debra Mudge, Joe King, Todd Bannowsky
AGAINST: None
PRESENT and not voting: None
ABSENT: Bobby Chenault, David Newton

The average taxable value of a residence homestead in Kimble County last year was \$96,420.00 (average taxable value of a residence homestead in the taxing unit for the preceding tax year, disregarding residence homestead exemptions available only to disabled persons or persons 65 years of age or older). Based on last year's tax rate of \$.2197 (preceding year's adopted tax rate) per \$100 of taxable value, the amount of taxes imposed last year on the average home was \$211.84 (tax on average taxable value of a residence homestead in the taxing unit for the preceding tax year, disregarding residence homestead exemptions available only to disabled persons or persons 65 years of age or older).

The average taxable value of a residence homestead in Kimble County this year is \$104,279.00 (average taxable value of a residence homestead in the taxing unit for the current tax year, disregarding residence homestead exemptions available only to disabled persons or persons 65 years of age or older). If the governing body adopts the effective tax rate for this year of \$.2131 per \$100 of taxable value, the amount of taxes imposed this year on the average home would be \$222.22 (tax on average taxable value of a residence homestead in the taxing unit for the current tax year, disregarding residence homestead exemptions available only to disabled persons or persons 65 years of age or older).

If the governing body adopts the proposed tax rate of \$.2188 per \$100 of taxable value, the amount of taxes imposed this year on the average home would be \$228.16 (tax on the average taxable value of a residence homestead in the taxing unit for the current tax year, disregarding residence homestead exemptions available only to disabled persons or persons 65 years of age or older).

Members of the public are encouraged to attend the hearings and express their views.

Special Provisions if Applicable

Criminal Justice Mandate (use for counties, if applicable):
 The _____ County Auditor certifies that N/A County has spent \$ _____ in the previous 12 months beginning _____, _____, for the maintenance and operations cost of keeping inmates sentenced to the Texas Department of Criminal Justice. _____ County Sheriff has provided information on these costs, minus the state revenues received for reimbursement of such costs.

Enhanced Indigent Health Care Expenditures (use if applicable):
 The _____ spent \$ _____ from _____ to N/A on enhanced indigent health care at the increased minimum eligibility standards, less the amount of state assistance. For the current tax year, the amount of increase above last year's enhanced indigent health care expenditures is _____.

Openness adopted as co-op policy

PEC explains Texland settlement funding

by Jodi Lehman
August 21, 2008
reprinted with permission
The Horseshoe Bay Beacon
Newspaper

The Pedernales Electric Board of Directors adopted an open records and open meetings policy, rebuffed an effort to reconsider its support of the class action settlement and tabled consideration of an energy conservation resolution during a four hour meeting Monday in Johnson City.

New directors Patrick Cox, Kathryn Scanlon and James E. Williams co-sponsored the motion to adopt substantially the same open governance provisions that state law places on public utilities. Director Val Smith joined the three sponsors in voting for the new policy, saying the Texas Legislature was "going to cram it down our throats anyway."

Board President R. B. Felps voted against the policy, saying it would be "a monumental change" and was too much to digest at one meeting. Director Vi Cloud voted against the policy, then asked to change her vote to endorse the policy, then decided to settle on abstention as her vote of record. Treasurer O.C. Harmon abstained.

The new openness policy requires 72 hour advance notice of meetings, except in cases of emergency, restricts

deliberation between a quorum of the voting directors to open meetings, and requires directors to complete a course of training in their responsibilities regarding open governance.

All actions, decisions and votes on matters deliberated in executive session must be made in an open meeting, except on matters regarding real estate, personnel, and competitive business issues.

Cox said, "Transparency is the cornerstone of what we should practice...This policy will establish PEC as a leader in open governance."

Advisory Director Charles Tesar and Cox asked the board to reconsider PEC's support for the settlement in the class action lawsuit given revelations made since a committee of the PEC board agreed to its terms in March. Cox asked the board to replace their Austin law firm of Clark, Thomas & Winters. Tesar, who does not have a vote, asked the board to reconsider its counsel's "strong aggressive lead" in the suit and its appeal. The board voted to continue its support of the settlement and its current lawyers. Cox was the lone vote against.

At a special meeting of the PEC board on August 12, HSB resident Paul Langston asked PEC General Manager Juan Garza if he still supported the settlement given the recent discovery of \$565,000 sitting in a bank account at Cattleman's National

Bank with only former General Manager Bennie Fuelberg and former Board President Bud Burnett as signatories. Garza gave his full support to the settlement at that meeting.

On Monday, Garza read a four page explanation of his support for the settlement that grants releases to everyone associated with PEC for any known and unknown actions, and requires PEC to pay \$1.6 million of the \$4 million fee to the plaintiffs and their attorneys.

Garza said he supports the settlement because "a protracted legal proceeding" could be a financial burden and a distraction on PEC, and the reforms of the past 10 months have made PEC a better organization. He said the 1987 indemnification provision passed by the board would require PEC to pay any damages assessed against the individual defendants. General counsel Kimberley Paffe said that the terms of the settlement and the trial judge's order requires PEC to "support the agreement" and if PEC did not defend against the current appeals, it could be found in contempt of court.

One of the appellants in the case, David Allen Hall of Blanco, argues in his brief to the 3rd Court of Appeals in Austin that the 1987 board indemnification is "unenforceable in Texas as against public policy and a violation of the limits imposed by Texas law." Hall cites the Texas Non-Profit Corporation Act which provides, "A director may not be indemnified...(if) the person is found liable on the basis

that personal benefit was improperly received by him, whether or not the benefit resulted from an action taken in the person's official capacity."

PEC was unable to confirm last week if it had received its \$14,308,351.20 share of the \$18,063,110.90 settlement the Lower Colorado River Authority paid to Texland on May 26, 1987. At Monday afternoon's meeting, Garza said PEC received part of the \$14 million. Texland was a failed effort by PEC and Bluebonnet Electric Cooperative to build a coal fired electric generation facility in the early 1980's to compete with the LCRA.

Garza read a prepared statement regarding the \$565,000 in the Texland account at Cattleman's and the \$14 million PEC was to receive from a settlement from the LCRA involving the Texland project. "Records indicate that Bluebonnet and PEC were paid by wire transfer on May 27, 1987 with Bluebonnet receiving \$3,754,759.71 and PEC receiving a deposit of \$12,903,126.74."

While admitting that PEC "records are still incomplete," Garza stated, "The remaining \$1,405,224.46 appears to have remained with Texland for payment of their outstanding liabilities (primarily to certain consultants and law firms)."

Garza said, "The \$12 million received by PEC was used to repay advances, including interest, owed to PEC. As a result of recouping all of its costs, PEC's financial statements ceased to reflect any investment in the

Texland venture after July 1987."

Earlier Monday, Bluebonnet and PEC (as Texland's only two members) called a membership meeting of Texland Electric Cooperative, Inc. and elected new a new board consisting of Bluebonnet and PEC directors. PEC director Kathryn Scanlon was elected President of Texland. Armed with corporate authority over Texland, Scanlon will remove Fuelberg and Burnett from the Cattleman's bank account, take steps to claim the \$565,000 and close the account.

The PEC board approved a \$25,000 donation to the LBJ Library Foundation to help fund a "To the Moon" exhibit at the LBJ Library in Austin, which is outside the PEC service area. Advisory Director Tesar questioned the precedent this gift establishes, especially since the board at last month's meeting denied a request from the Canyon Lake Community Library to help with their building fund. At that time, the board told the Canyon Lake Community Library representatives that PEC policy was to help groups write grant applications, but not to fund projects such as that requested.

Board Vice President Williams presented a preliminary plan to revise the number and role of advisory directors on the PEC board, but no action was taken on the proposal.

The September board meeting will again be held in Johnson City, but in October the meeting will be held at the Hays County Performing Arts Center.

New hours **New hours**



Mama Kay's

Sunshine Cafe & Bakery

1907 Main in Junction
Open till 9 p.m. every night
Mornings open: Monday - Saturday - 6 a.m.
Sunday 7 a.m.

M-33-1p

Junction Eagle Varsity Football 2008

Date	Opponent	Time	Location
August 29	Bronte	7:30	Bronte
Sept. 5	Sonora	7:30	Sonora
Sept. 12	Medina (Homecoming)	7:30	Junction
Sept. 19	Harper	7:30	Junction
* Sept. 26	Eldorado	7:30	Junction
* Oct. 3	Christoval	7:30	Christoval
* Oct. 10	Irion County	7:30	Junction
* Oct. 17	Rocksprings	7:30	Rocksprings
Oct. 24	Open		
* Oct. 31	Mason	7:30	Junction
* Nov. 7	Menard	7:30	Menard

* Denotes District games

Are you at RISK?

YES! EVERYONE is at risk!

* Stroke *Abdominal Aortic Aneurysm
*PAD (Peripheral Artery Disease)

- Family history of stroke or aneurysm?
- Have you experienced leg pain when walking?
- Are you a Diabetic?
- Do you have heart disease?
- Vision loss, double or blurred vision?
- Severe Headaches?
- Do you have high cholesterol?
- Do you smoke?
- Most physicians cannot hear a 50% carotid blockage or a tight 95% blockage

See Packages Below

First United Methodist Church
902 Main St.
Junction, Texas
9:30 a.m. - 3:30 p.m.
Sept. 6, 2008

You NEED to be CHECKED!
Dr. referral NOT needed

Concho Diagnostics will be at First United Methodist Church on Saturday, September 6, 2008. Schedule your vascular screening today; don't become a statistic! These are simple, painless screenings that could save your life or the life of a loved one! All procedures are performed by a registered vascular technician. Written results are mailed to your home within 48 hours. All 3 tests only take 30 minutes! Cholesterol and diabetes testing is also available.

Package A: Three Vascular Screening for \$99	Package C: Three Vascular Screenings, Gallbladder and Thyroid Checks, AND Cholesterol and Glucose readings ONLY \$159
Package B: Three Vascular screening and Cholesterol and Glucose Readings \$135	Call 325-653-3000 or 1-888-245-7605 to schedule Your appointment

C-33-2c

Hospital board considers budget

The Kimble County Hospital Board held their regularly scheduled meeting on Monday, August 25, at 6 pm in the Hospital conference room. The Board had a quorum as four members were present: Todd Bannowsky, Joe King, Charles Loeffler, and Debra Mudge.

The first order of business dealt with the upcoming budget. Preferred Management's contract calls for a sum of \$684,000. It also suggests that an additional \$50,000 be designated for expenses that may be incurred by the Hospital Board.

Board President Charles Loeffler noted that approximately \$40,000 goes to the Kimble County Appraisal District to pay for assessment and tax collection. This would leave \$10,000 for expenses the board may have. He felt this was adequate for the upcoming year.

The board approved a budget of \$734,000 for the 2009-2010 fiscal year.

This led to a discussion of the tax rate required to fund the budget amount. Given the current assessed property values, a tax rate of \$.2188 per \$100 of property value is required to raise the budgeted funds. Due to increased assessed values, this is slightly less than last year's tax rate of \$.2197 per \$100.

The board voted to propose a tax rate of \$.2188 and will have public hearings to receive any comments on September 4 and 8 at 5:30 p.m. in the Hospital conference room.

The board also voted to extend their Directors and Officers (D & O) Liability Insurance for a three year period. This will cover the board for any legal actions taken against them for matters that occurred prior to June 1 of this year. Any matters after that date are covered by insurance carried by Preferred

Management. The cost of the coverage is approximately \$14,000.

Next the board addressed how to disburse approximately \$19,000 in monies currently in grant accounts. The Hospital Foundation is responsible for \$5,500 of the money, designating the gift to be used for cardiac equipment.

As the equipment is no longer required, the board voted to turn this amount over to Preferred Management, who would then work out with the foundation how to designate the funds.

The board also voted to turn the remaining funds over to Preferred Management to be used on the new telephone system for the Hospital.

The board then considered a proposal from Rees Associates, Inc. to do a study and present a facility business plan outlining options for upgrading the Hospital facilities. This would be done at no cost to the Hospital and take approximately two-and-one half months to complete. The board voted to accept this proposal.

Mike Easley of Preferred Management gave a brief Hospital report, indicating that a physical therapist and an additional lab technician are to be hired. He also noted that the Hospital now has teleconferencing system, which may be available for general use by the community at large.

All business being concluded, the meeting was adjourned.



Luke Tillman

Land Improvement

Cedar Clearing Mesquite Clearing
General Bobcat Work Right of Ways

210-216-9304

Junction, Texas

T-31-tfnc



Parker Lumber

Bridal Registry

Melissa Mathis & Clay Trojczak
Shower-May 10, 2008
June 7, 2008

Katie Whitworth & Blair Guidroz
June 14

2136 N Main 325-446-2243

Attention Eagle Supporters!

Anyone.....businesses who support the Junction Eagles, proud parents, aunts, uncles, grandparents, friends.....anyone!
Contact *The Junction Eagle* to reserve a spot on the Sports Pages or to place an ad in the 2008 Fall Sports Program.

See form on page 3 of this edition.

Deadline is September 3!

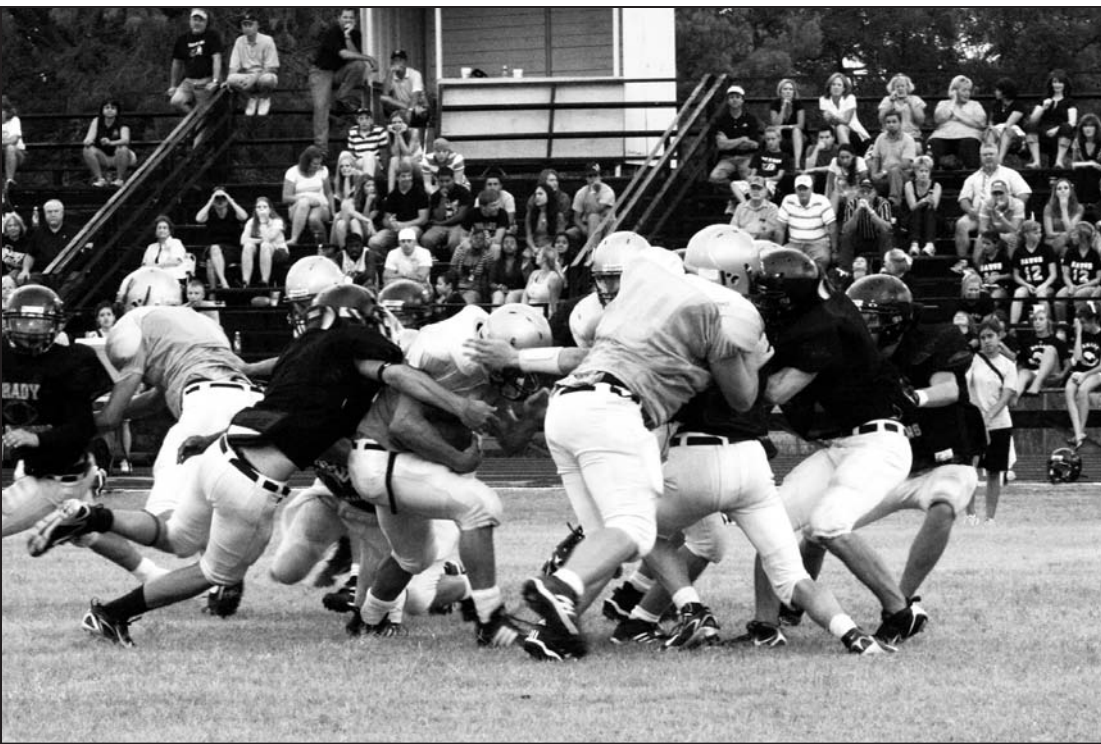
Junction Eagles vs. Bronte Longhorns, Friday, August 29, 7:30 p.m. in Bronte.



Sophomore running back Seth Stapp gets some help for the last few yards from classmate Raphael Fuentes.



Jason McKinnerney is given plenty of time to get this pass off by the imposing presence of Nathanel Warden and Joe Wood.



Senior running back Dustin Stapp has his head down and drives for more yardage behind the blocking efforts of junior William Whitworth, left, and freshman Jordan Keeton, foreground.



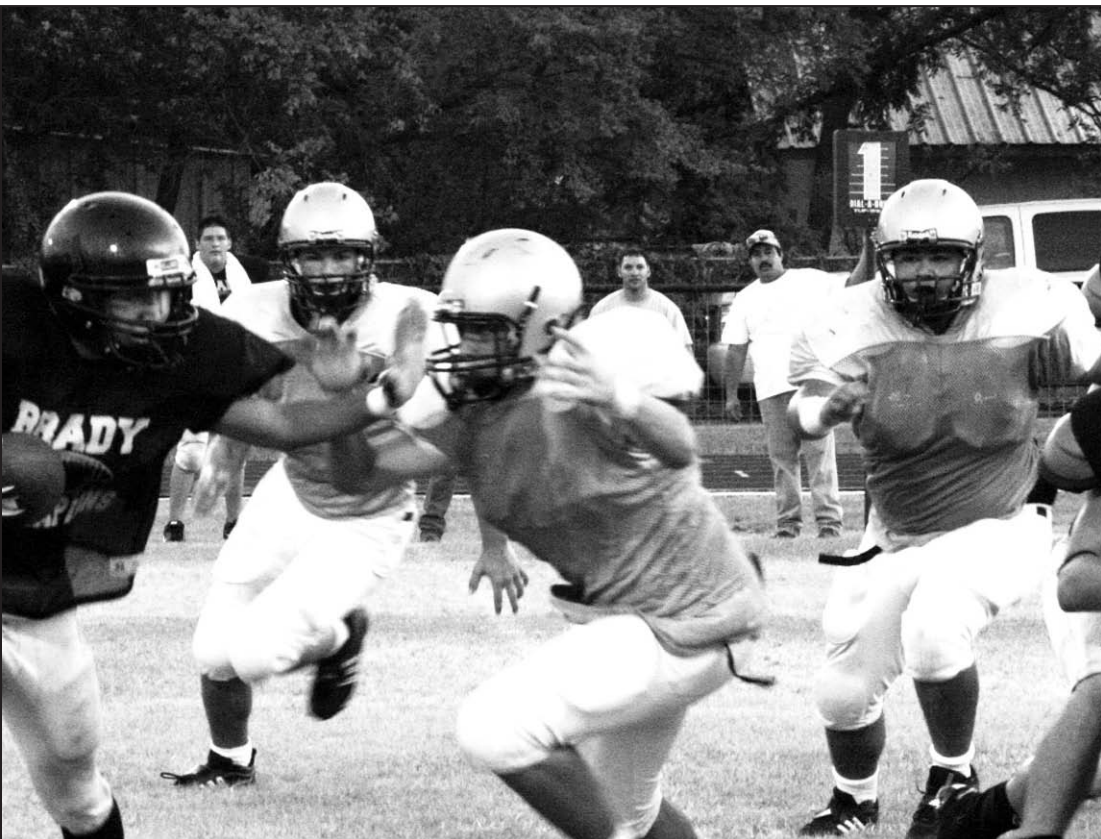
The Eagles swarm in on defense. Sophomore linebacker Trevor Brawley goes airborne as senior Kyle Wimberley wraps up this Brady Bulldog runner. Senior Cole Sandlin moves in to provide backup.



The Eagles close in on defense. Senior Ashton Thomas, far left, comes in from across the field while linebackers Dustin Stapp, center, and sophomore Trevor Brawley force this Brady Bulldog ballcarrier to the sidelines.



Junior quarterback Jason McKinnerney rolls right and fires to his Eagle teammate cutting under the Brady defense.



Tommy Falcon is set to wrap up this Brady back. Senior A.J. Heap and Raphael Fuentes move in to support the play.

Don't leave home without it!

A great gift for college students is a subscription to *The Junction Eagle*! When you know your college student's address, just fill out the coupon and mail it to us! We'll get the subscription started right away.



Subscribe to *The Junction Eagle*

_____ \$20 in Kimble and surrounding counties _____ \$23 elsewhere in Texas
_____ \$25 out of state

Name _____
Address _____ City _____ State _____ Zip _____

Send check or money order if mailing in. Credit cards accepted in person only.

It's like getting a letter from home every week!

The Junction Eagle

215 N. 6th Street • Junction, Texas 76849

IN SHORT

Fifth Saturday Flea Markets cancelled

Meals on Wheels will be cancelling out the remainder of the Fifth Saturday Flea Markets.

Holekamp graduates from Schreiner University

Achshah Holekamp of Kerrville graduated from Schreiner University's Vocational Nursing Program during campus ceremonies held on August 8, 2008, before an audience of friends, family, and members of the University's academic faculty. Holekamp is the daughter of Teddy Holekamp and Gail Stanford.

Eagles running back Dustin Stapp's daily visits to the gym all summer really showed last Thursday. Here he takes the pigskin around the Eagle line and heads up field. Plan to spend Friday nights under the lights at Eagle Stadium, or wherever the team goes to compete. The Eagles will appreciate your support, and you'll really love watching these young athletes display their Eagle Pride!



Capital Highlights

Ed Sterling
Texas Press Association

Heads of state submit ideas to solve transportation funding puzzle...

Their goal, they said, is to finance a "world-class transportation system."

Texas' top three elected officeholders co-signed an Aug. 19 letter to Texas Transportation Commission Chair Dierdre Delisi expressing their collective wishes for a plan to fund transportation projects over the next biennium.

Gov. Rick Perry, Lt. Gov. David Dewhurst and House Speaker Tom Craddick told Delisi to prepare for an Aug. 29 bond review board meeting with certain goals in mind:

- End the practice of funding the Texas Department of Public Safety with gas taxes that are needed for road construction. Use general revenue to fund the DPS.
- Create a finance entity that will allow the state's public investment fund managers to put money directly into state transportation projects that offer a "potential solid long-term return."
- Pass enabling legislation and appropriations for the Prop. 12 bonds approved by voters.

In November 2007, voters approved Prop. 12, amending the state constitution to authorize \$5 billion in general obligation bonds for transportation projects.

In September 2003, voters

approved Prop. 14, allowing short-term borrowing by the Texas Department of Transportation. Perry, Dewhurst and Craddick instructed Delisi to prepare to begin selling \$1.5 billion in Prop. 14 bonds in September.

Executive order begins Blue Alert...

An executive order signed by Gov. Rick Perry on Aug. 18 launched Blue Alert, a communications network to help track down suspects who flee after killing or seriously injuring federal, state or local law enforcement officers in the line of duty.

Blue Alert, based on the AMBER and Silver Alert programs, combines efforts of the DPS, the Governor's Division of Emergency Management and TxDOT.

When Blue Alert is activated, the suspect's vehicle information will be displayed across the state primarily via TxDOT dynamic message signs and media broadcasts. Alerts instruct the public to contact local law enforcement via 911 if they have information related to the offense.

Immigration policies in question...

Two Republican state lawmakers have asked Attorney General Greg Abbott if the Texas Legislature has the authority to deter local governments from adopting policies, or invalidate existing policies that hinder state enforcement of federal immigration laws.

In the request for an opinion, Rep. Frank Corte of San Antonio and Sen. Dan Patrick of Houston wrote that "sanctuary cities" advocate policies that are favorable to illegal immigrants.

To support their views, the

lawmakers cited the Oklahoma Taxpayer and Citizen Protection Act of 2007, which prohibits sanctuary cities and bars local governmental bodies from creating policies to limit or prevent local law enforcement officers from communicating or cooperating with federal officials on the immigration status of a person.

Online certification testing grows...

Applicants took more than 50,000 online Texas teacher certification tests via the Internet in the past year.

And, Texas is leading the nation in online certification testing, the Texas Education Agency reported Aug. 20.

Online testing has been available in Texas since 2004-2005. Test takers have five hours to complete an exam, but the average completion time is between three and four hours. The results come back in about a week.

Karen Loonam of the State Board for Educator Certification said she expects online testing eventually will be the sole method for certification, but she does not expect paper and pencil tests to disappear anytime soon.

Interim DPS director is named...

The Texas Public Safety Commission named Texas Highway Patrol Major Stan Clark of Garland interim director of the Texas DPS on Aug. 15.

Clark will take office on Sept. 1 and serve until the Texas Public Safety Commission, which oversees the DPS, has selected a permanent director.

Clark has been with the DPS since 1973. He has worked at DPS offices in Tyler and McAllen, and has been a member of the DPS Capitol Police force.

JISD NEWS

by Dr. Renee Schulze

JISD Gold Card for Senior Citizens
JISD Gold Card for Parents of Participants
"We Want You at all Our Events!"
Go Eagles!!!

As E-E-EAG-L-L-LES begin to fill the air from the beat of the Junction Eagle Band to the chants from cheerleaders, the volleyball, and football teams, we find ourselves engulfed in anticipation and excitement as our students begin a new season and a new school year.

Senior citizens and parents of participants in Junction ISD are invited to attend programs free of charge with the "Gold Card." This is our third year for the gold card program for senior citizens and our second year for parents of participants. If you have a "gold card" from previous years, it is still valid. However, if you are like me and washed or lost that one, just stop by the JISD Administration office to pick up another one.

If you are age 60 or older and a resident of Junction ISD or a parent of a participant, you qualify for free admission to all Junction ISD athletic, band, choir, and drama events.

You may pick up an identification card, the GOLD CARD, at the central office.

This card will allow you free admission to all contests and events played in Junction. The Gold Card will not allow free admission to contests or events which take place at opposing schools.

To obtain a Gold Card, visit the JISD Central Office at 1700 College Street between the hours of 8 a.m. and 4:00

p.m. I am anxious to support, watch, and take part in the 2008-2009 year with the outstanding students at JISD, and thank you for sharing in these extraordinary experiences with JISD staff and your children.

We sincerely hope you will take advantage of this gift to you from your school district-Junction ISD! Go Eagles! "Bridging Years of Success!" Please visit our web site at www.junctionisd.net to view athletic and event schedules.

The Original TEXAS CROSSWORD
by Charley & Guy Orbison
Copyright 2008 by Orbison Bros.

ACROSS

- athletic org. for colleges (abbr.)
- Monte _____, TX
- Adam & Eve's first born
- TXism: "big enough to burn diesel"
- TX Robby film: "_____ to Billy Joe"
- even more talkative
- dry, arid
- TXism: "coasts _____ leg"
- air gun ammo
- TXism: "mobile mouse _____" (cat)
- welding method
- TXism: "blind _____"
- TX-raised Erin Cummings film: "Tomorrow's _____" ('06)
- summer savior in TX (abbr.)
- TX-based chain: "Taco _____"
- TXism: "fought tooth and _____"
- T-shirt size
- with "The," '91 film of TX-raised Emily Warfield (4 wds.)
- "it's just a means to _____"
- a Ranger catcher, Max
- school exercise (abbr.)
- TXism: "_____ slapper" (funny)
- flowers: _____ way of saying "love"
- Cowboy safety Thomas for '93 Super Bowl
- pie _____ mode
- TX-born actor Rip (init.)
- Santa's helpers
- profession of TX-born Renee Zellweger
- Odessa has replica of Shakespeare's _____ Theatre
- LBJ appointed this Fortas to Supreme Ct.
- TXism: "take a look _____"
- Benito, TX

DOWN

- Tex-Mex appetizer
- Armstrong Co. seat
- TX Buck Owens' "I've Got _____ the Tail"
- TXism: "busy as _____-armed paper hanger"
- TX-born singing cowboy Autry (init.)
- TX pronghorn
- famous '50s Dallas stripper, Candy
- Mavs retired #15 jersey of this Davis
- Chevy model
- he was "Mingo" when TX Fess was "Daniel" (init.)
- cell nucleic acid
- first name of town of Alamo, TX
- TX Dabney Coleman '87 film
- give consent
- Green was an Mavs "iron man"
- Denton outlaw
- Bass
- TXism: "busy as _____tender on pay day"
- tropical tree fruit
- TXism: "critter"
- TX Tanya Tucker's mother & her daughter's middle name
- leases
- one-man play based on Truman Capote
- TXism: "no flies on _____" (attractive)
- TX Pride's "_____ So Loved"
- male deer
- CSA general: Robert _____
- Winnebagos
- TX-native Quaid film: "Curse of the Starving _____"
- TXism: "he'd have to study up _____ half wit"

Sudoku puzzle

Sponsored each week by:

Kimble Hospital

2101 Main Street, Junction
(325) 446-3321

		1	2		3
4		5			2
	6		7		
5	2		6		7
1		5	3		6
3		8	4		9
		3		8	
2		6			4
7		9	1		

COW POKES
by Ace Reid

http://www.cowpokes.com

"What an economical breed! They're thriving on hot weather, prickly pear and alkali water!"

Cowpokes is sponsored each week by

JUNCTION NATIONAL BANK
The Brand Name in Kimble County Banking
www.junctionnational.com
Member FDIC

Community Calendar

Thursday, August 28

- London Community Library: 9-10 a.m., London Com. Center
- London Exercise Group: 9 a.m., London Community Center
- Rotary: noon, Isaack's Restaurant
- Kimble County Republican Women: 5 p.m., Library Meeting Room
- Alcoholics Anonymous: 8 p.m., Trinity Episcopal Church

Friday, August 29

- London Community Library: 10-11 a.m., London Comm. Center
- London Exercise Group: 10 a.m., London Community Center
- Varsity Football: 7:30 p.m., Bronte Stadium

Saturday, August 30

- Benefit Softball Tourney: 8 a.m., Baseball Field
- St. Theresa Annual Festival: 10 a.m.-3 p.m., St. Theresa Catholic Annex
- Harrison Anniversary: 1-3 p.m., First United Methodist Church Fellowship Hall
- Kimble County's Sesquicentennial Birthday Party: 5 p.m., Coke Stevenson Center

Sunday, August 31

- Men's Bible Class: 9 a.m., broadcast on KRVL 93.5 from Girl Scout House
- Celebrate Recovery: 6 p.m., First United Methodist Church

Monday, September 1

- Kimble County Kow Kick: 10 a.m., City Park
- Alcoholics Anonymous: 7 p.m., Kimble County Library
- Al-Anon: 7:30 p.m., Trinity Episcopal Church Parish Hall

Tuesday, September 2

- London Community Library: 10-11 a.m., London Com. Center
- London Exercise Group: 10 a.m., London Community Center
- London Volunteer Fire Department: 7 p.m., London VFD Hall

Wednesday, September 3

- Department of Public Safety Driver License representative: 9:30 a.m.-noon, 1-3:15 p.m., Courthouse Courtroom

If you would like to have an event placed on the Community Calendar, call 446-2610 before 5 p.m. on Monday or email to editor@junctioneagle.com.

UPCOMING EVENTS

September 3

Deadline for advertising in the Football Program

September 6

Open House for Body Works Massage Therapy

Be on the lookout for school children, buses

submitted by the Texas Department of Public Safety

As Texas school children prepare to head back to school, the Texas Department of Public Safety reminds all drivers to watch out for children walking to school or waiting for school buses--and to obey all traffic laws related to school buses.

"DPS has zero tolerance for vehicles that pass stopped school buses," said Col. Thomas A. Davis, Jr., director of the DPS. "Drivers must slow down, obey school zone speed limits and stop for school buses to ensure the safety of Texas school children."

Drivers also need to slow down and pay attention in school zones. Children may not be looking for on-coming traffic when they step into the roadway, so drivers must remain alert. The most dangerous time of a student's journey on a school bus is when they are entering or exiting the bus, and state law requires that approaching drivers stop when a school bus is stopped and operating a

visual signal (red flashing lights or a stop sign).

State law requirements

State law requires approaching drivers to stop when a school bus is stopped and operating a visual signal (red flashing lights or a stop sign). Drivers should not proceed until the school bus resumes motion; the driver is signaled by the bus driver to proceed; or the visual signal is no longer active.

A driver does not have to stop for a school bus if it is on a highway with roadways separated by an intervening space or physical barrier. (If a highway is divided only by a left-turning lane, the roadways are not separated, and drivers must stop for school buses.)

Punishment for drivers who do not stop

Drivers who do not stop for school buses face a fine of up to \$1,000. If a driver is convicted of this offense more than one time, DPS can suspend their license for up to six months.

For more information on school bus safety, visit <http://www.txdps.state.tx.us/schoolbus>.

IMPORTANT VOTING DATES

First day to accept an application for ballot by mail – September 5.

If you are over 65, an invalid, going to be out of the country during the early voting period and/or Election Day, you may apply for a ballot by mail. Please call the County Clerk's office at 446-3353 for an application and/or questions.

Last day for the County Clerk's office to receive an application for ballot by mail – October 28. (Received, not postmarked)

Last day to register to vote and/or make changes to your registration record – October 6

Any changes to your record must be in writing, your signature is required.

First day of early voting by personal appearance for the November 4 General Election – October 20.

Last day of early voting by personal appearance for the November 4 General Election – October 31

All early voting is in the County Clerk's office, 501 Main Street, Junction, Texas 76849

Flanagan

Continued from Page 1

woman's arms after a mastectomy, for example). This procedure can be effective in boosting one's immune system before having surgery.

For anyone having problems with their feet or just plain sore feet, Flanagan's sessions of Reflexology can really make a difference. There are excellent health benefits to be gained through manipulation of the feet (and hands). The intensive foot massage breaks up uric acid crystals and energy blockages.

The discomfort of pregnancy, especially during the later months, can be helped by addressing a woman's legs, neck, shoulders and low back pain. The tendency to stand swayed-backed creates soreness that can be ameliorated by Flanagan's Pregnancy Massage.

Lisa explained that she sets up a relaxing atmosphere, with soothing music, a fountain, even aromatherapy. The massage oils she uses rehydrate the skin.

Sessions at Body Works can be booked for a half-hour, hour, or hour-and-a-half, but only on Fridays. Lisa will continue to spend Mondays through

Thursdays at her Body Works in Kerrville. She travels to Kimble County to visit her mom, who lives near London. Since Lisa already sees a few people from the surrounding area, this will make a shorter trip for them.

Flanagan received her training at the European Massage

living adjustment. The Aldermen and Mayor will continue to receive, respectively, five and ten dollars for each meeting they attend.

Notices of City Council meetings are posted in the City Offices at 730 Main Street and may also be viewed by clicking on the "Council Agenda" tab on the City's website: www.cityofjunction.com. Meetings are held in the City Meeting Room at 102 N. Street.

Therapy Institute and has been practicing for thirteen years. She says she looks forward to meeting and serving the citizens of Kimble County, in part because her dad described folks from Junction as "some of the friendliest people" he ever met.

Drop by and see Lisa on Saturday, August 6.

Congratulations! Sarah and Larry Harrison

Fifty Years and Counting!



In honor of their 50th wedding anniversary, please come help us celebrate with cake and punch.

First United Methodist Church Fellowship Hall, this Saturday, August 30, 2008, from 1-3 p.m.

Cards Welcome.

No Gifts Please.

H-33-1c

How do you like your Hungr-Buster?

At DQ, our burgers are made with 100% pure all-American beef and grilled to perfection. Come in today and create your own favorite Hungr-Buster!

DQ Banana Cream Pie

That's What I Like About Texas.

www.dqtxas.com

©2008 DQ and the dQ logo are trademarks of DQ, Inc. All rights reserved. U.S. Pat. & TM Off. Tex. D.Q. Co. Inc. © 2008.

School CAFETERIA MENU

BREAKFAST

Monday, September 1
Holiday

Tuesday, September 2
Pancake w/syrup, sausage link, juice

Wednesday, September 3
Sausage patty, roll, fresh fruit

Thursday, September 4
French toast sticks, jelly, fruit

Friday, September 5
Biscuit, bacon, jelly, juice

LUNCH

Monday, September 1
Holiday

Tuesday, September 2
Golden fish patty, macaroni & cheese, tossed salad, hot rolls fruit cocktail

Wednesday, September 3
Carne guisada, pinto beans, corn, flour tortilla, rosy applesauce

Thursday, September 4
Chicken & noodles, bread sticks, green beans, sliced pears

Friday, September 5
Hamburger, lettuce/tomato/pickle, oven fried potatoes, carrot sticks w/ranch, chocolate pudding

Chef salads served to grades 6-12 and all adults. Chef salads are not served on Fridays except by request.

MILK IS SERVED TO ALL GRADES

JUNCTION STOCKYARDS

Next Monthly Cattle Sale

Tuesday, September 9, @ 11 a.m.
(2nd Tuesday of each month)

Sheep & Goat Sale – Mondays @ 10 a.m.
No Sale on Labor Day - September 1

YOUR SUPPORT IS APPRECIATED

Larry Crenwelge, Owner

325-446-3378

325-446-2721

J-33-2c

St. Theresa Catholic Church Fiesta!

Saturday, August 30, 2008

St. Theresa Catholic Annex

100 S. 7th St. Junction, Texas

10 a.m. - 3 p.m.

Fun: Raffle

(32" LCD-HD flat screen TV, \$300 Walmart Gift Card, \$250 Super S Food cert., \$200 Mastercard Gift Card, Super S Food cert., \$200 Mastercard Gift Card)

Auction (featuring a British made Parker-Hale, 25-06 rifle)

Bingo, Cake Walk, Pony Ride, Dunking Booth, Ball Toss,

Fishing Pond, Duck Pond, Face Painting, Country Store,

Thrift Store and More!

Food: Carne Guisada Plate, Tamales & Menudo

(Specialty by Gonzales Cafe)

Brisket Wraps, Hot Dogs, Nachos, Frito Pie

Dance: Tejano Mix DJ

(Eddie & Sheila Cardenas & Nick Ortega)

Hill Country Fairgrounds, FM 2169

8:00 p.m. - 12:00 Midnight

\$5.00 per person (Children under 12 free)

Proceeds will benefit the St. Theresa Catholic Church Building Fund

S-32-2c

Read the news even when you're away from home on the Web at: junctioneagle.com